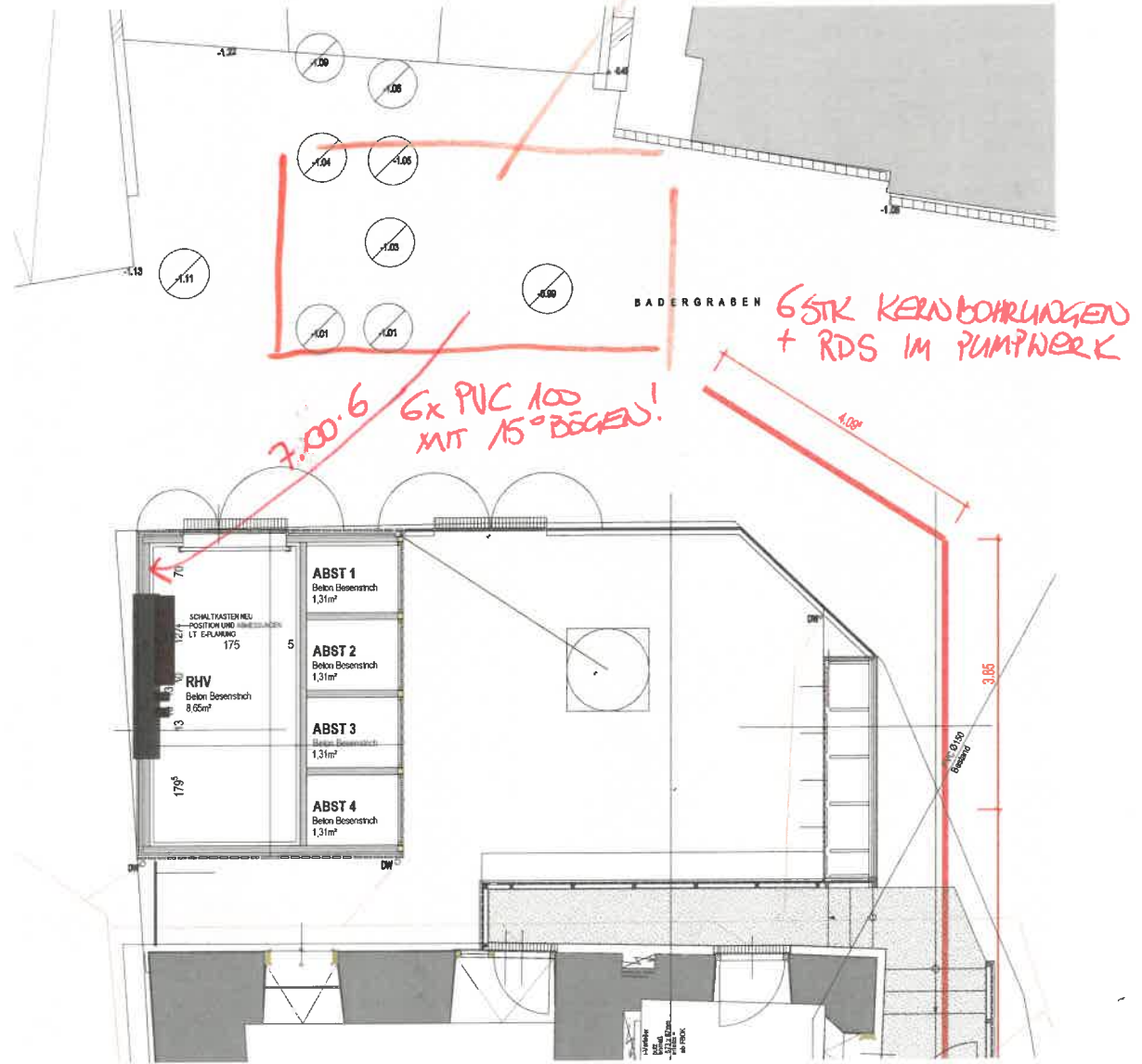


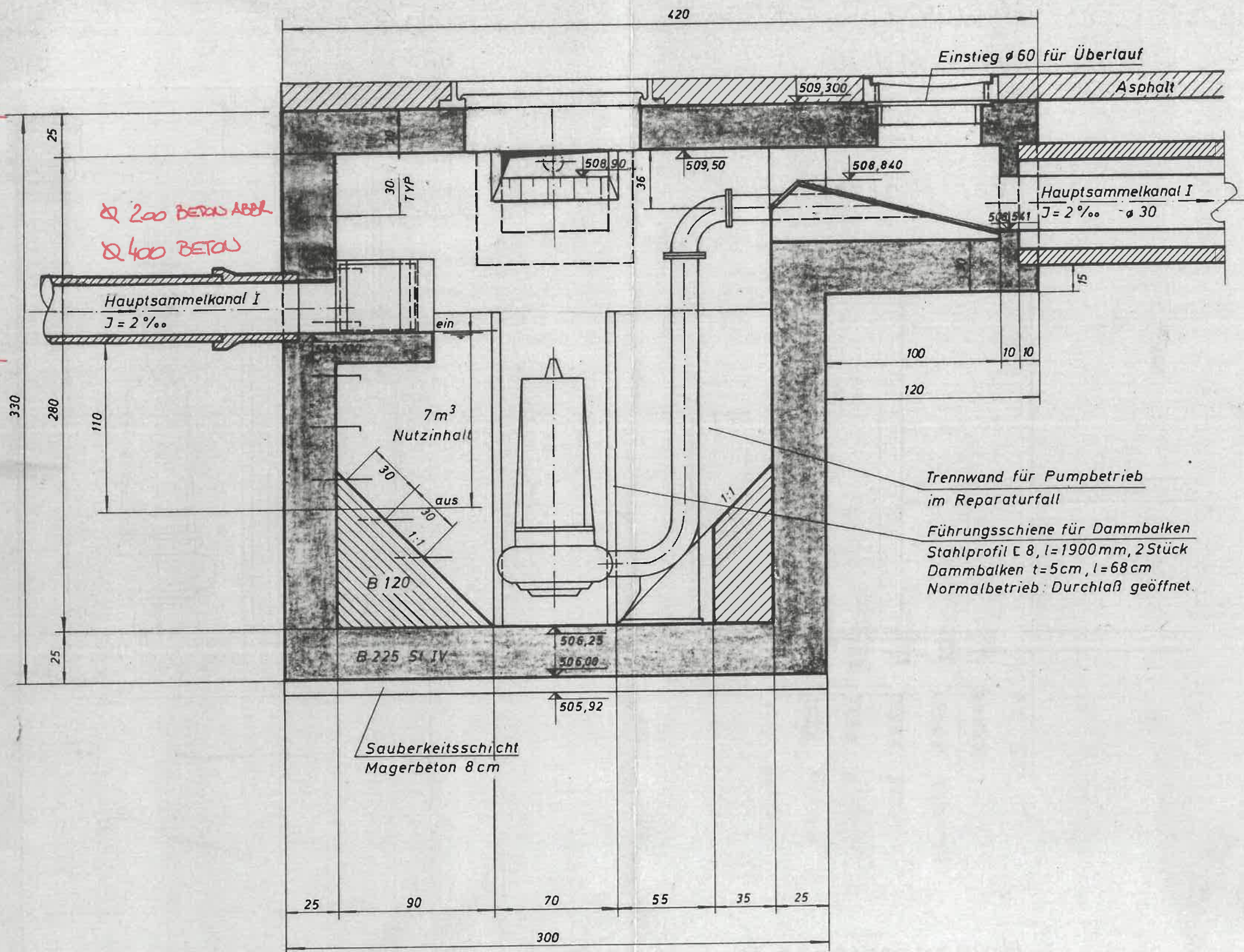
PVC DN 100  
VERBINDUNG PUMPWERK  
ZU LAGER RHV

LAGE PUMPWERK  
ANGENOMMEN!



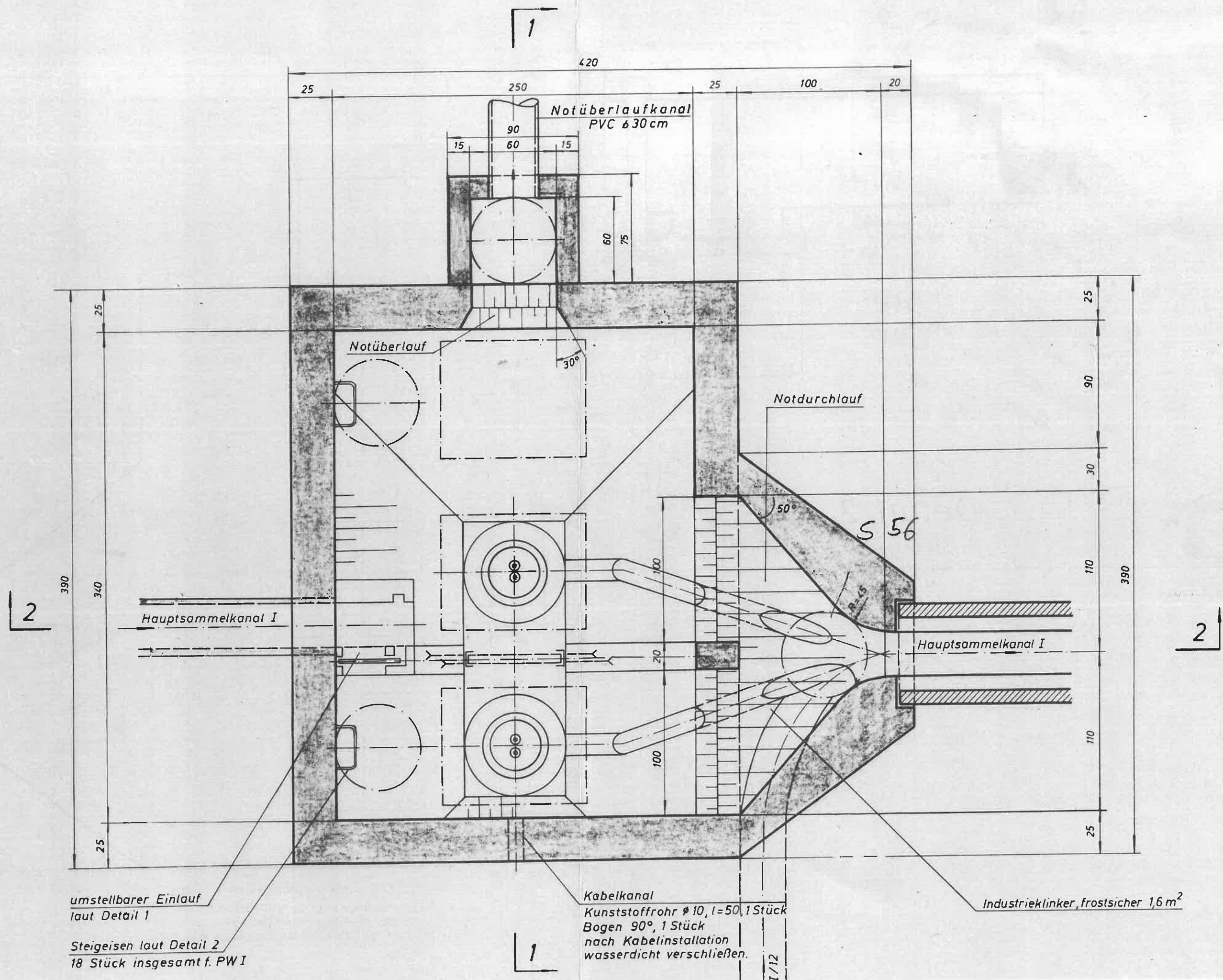
# Schnitt 2-2

KÜNETTE  
ZULACHT  
PUMPERK  
1,50 m  
3

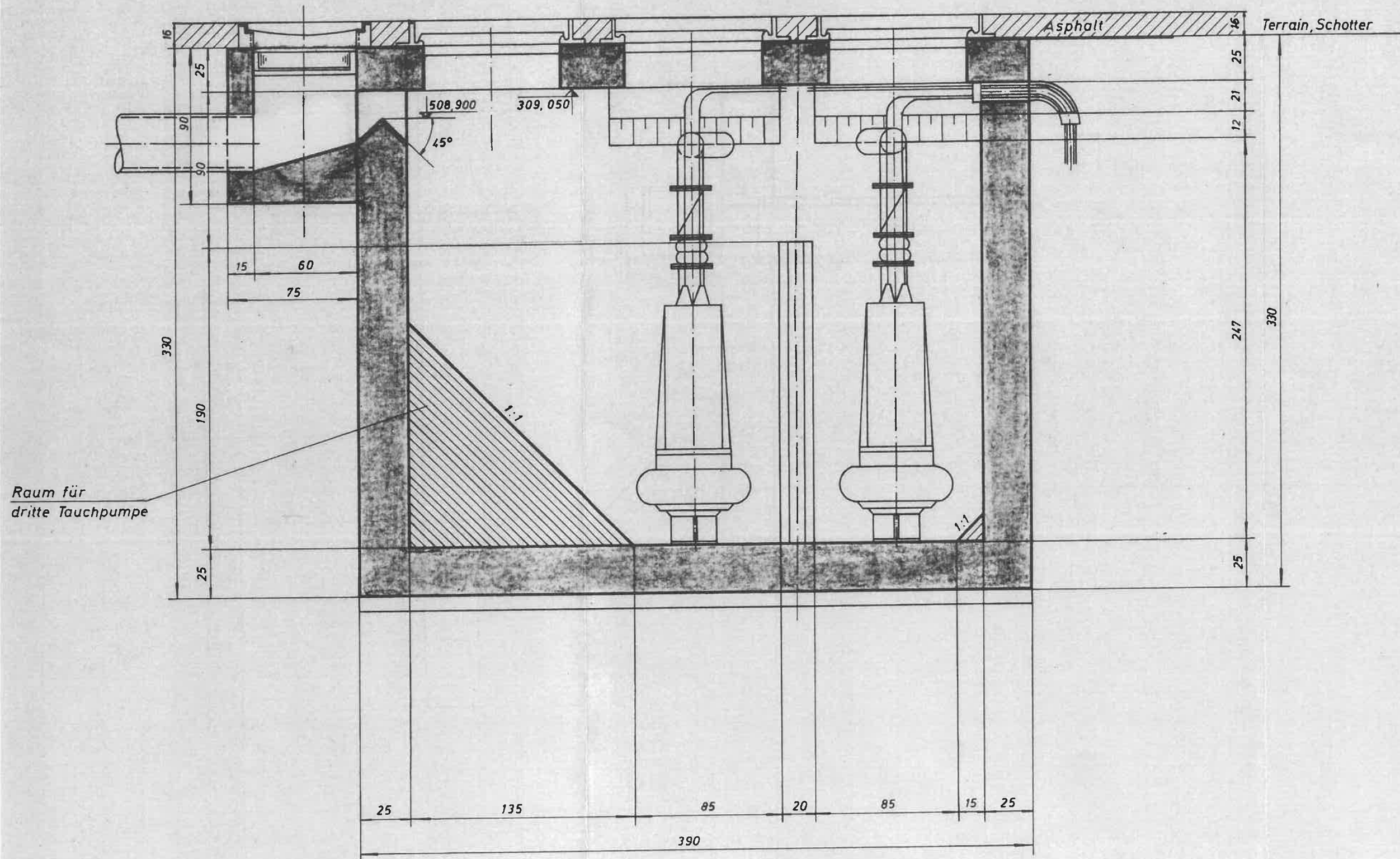




# Schnitt 3-3



# Schnitt 1-1





# Grundriß

